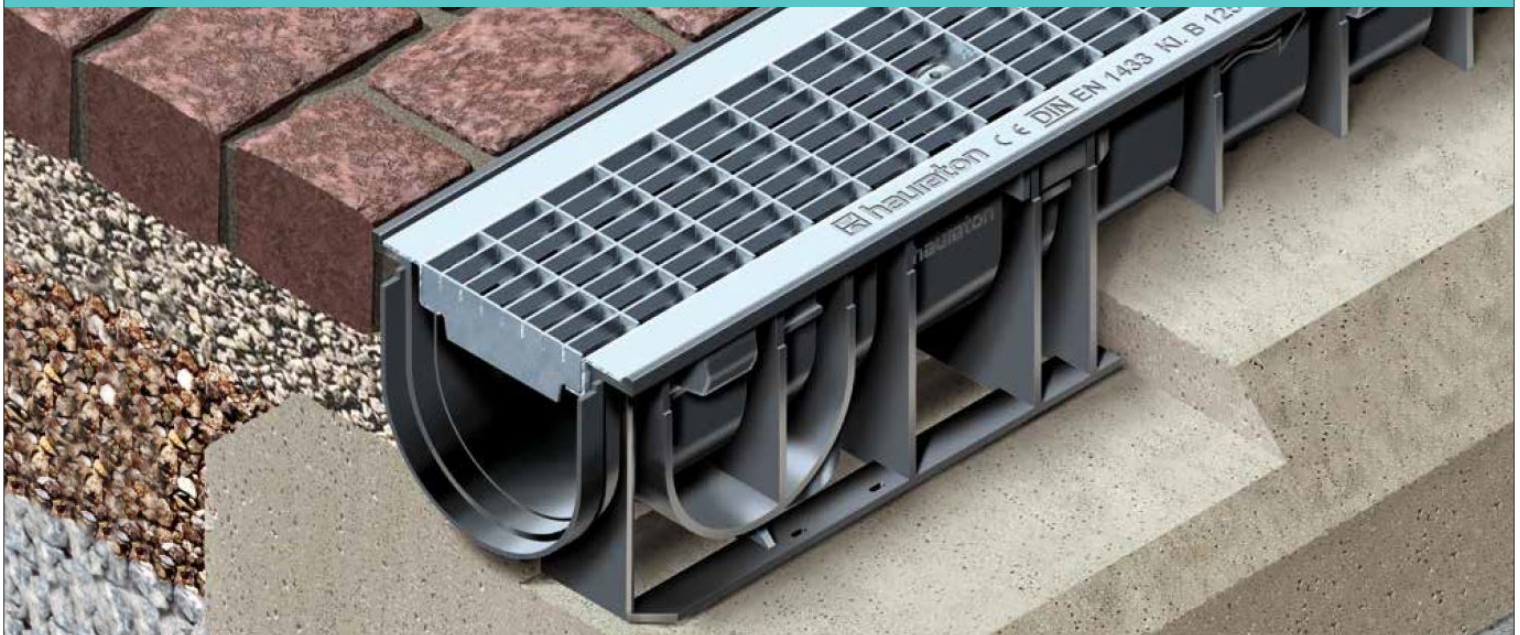


# RECYFIX® STANDARD

Quality linear drainage channel and grates for residential, public and commercial areas.



TECHNICAL GUIDE: **DC1.2**

## Applications

Public areas  
Driveways  
Courtyards  
Terraces  
Gardens  
Parks

## Product Attributes

Choice of 3 clear opening widths – 100, 150, 200mm  
Load rated to Class B 125kN and C 250kN  
Galvanised or Ductile Iron grating  
Environmentally friendly with 100% recycled PP channel  
Low weight  
High stability and functionality

## Approvals/Standards

Load rating as per EN 1433

## Quality

ISO 9001:2008 Quality Management System

## RECYFIX® STANDARD

Linear drainage channels for residential, public and commercial areas.

### Applications

- Public Areas
- Driveways
- Courtyards
- Terraces
- Gardens
- Parks

### Solutions

- High stability and functionality
- Low weight
- Preformed vertical and horizontal outlets
- Nominal sizes from 100 to 200mm
- Stable gratings in loading Class B 125kN and C 250kN according to EN 1433

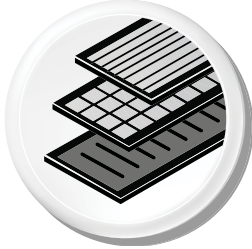
### Requirements

- To withstand the daily stress of cars and pedestrians
- Easy to transport and install
- Withstand weather influences (frost, heat, humidity)
- Must be in accordance with EN 1433
- To maintain their performance and appearance for many years



FIG. 1 Access to private house

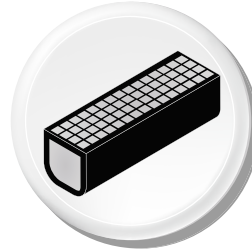
# The benefits of RECYFIX® STANDARD Channels



### Numerous grating options

- Variety of materials including ductile iron and galvanised in slotted and mesh.
- Narrow slot width for pedestrian areas available.

= Flexibility



### Pre-assembled ready for installation

- Channel and grating = one part
- No spare parts
- Easy handling in stock and on construction site
- Cost-efficient transport

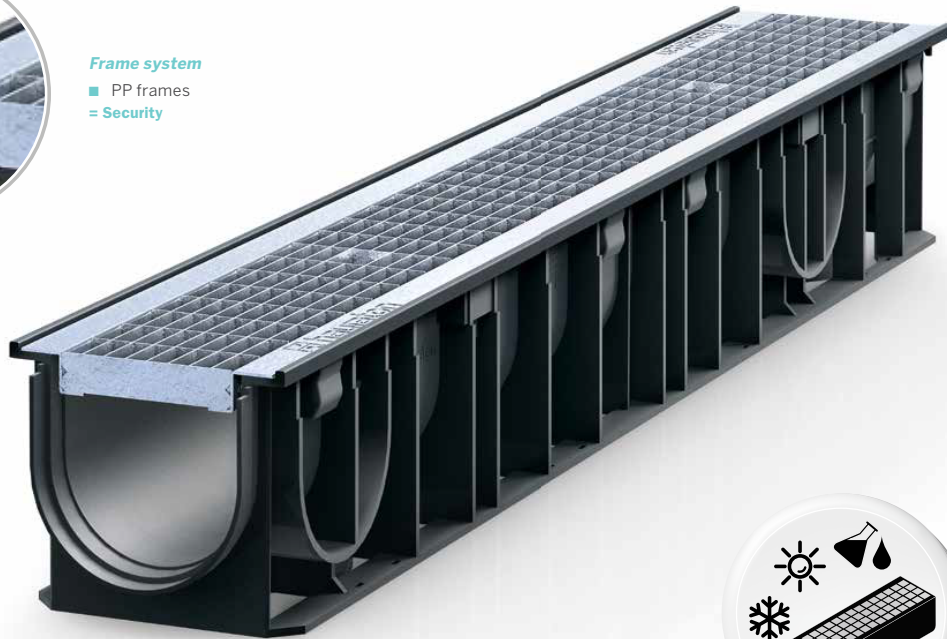
= Lower costs



### Frame system

- PP frames

= Security



### High resistance

- High resistance against frost, de-icing salt and UV rays
- Withstands great temperature differences

= Durability



### Low weight ensures easy handling on site

- Much lighter compared to channels made of polymer concrete
- Easy transport and installation

= Faster, safer installation

# Components

## Load Classes

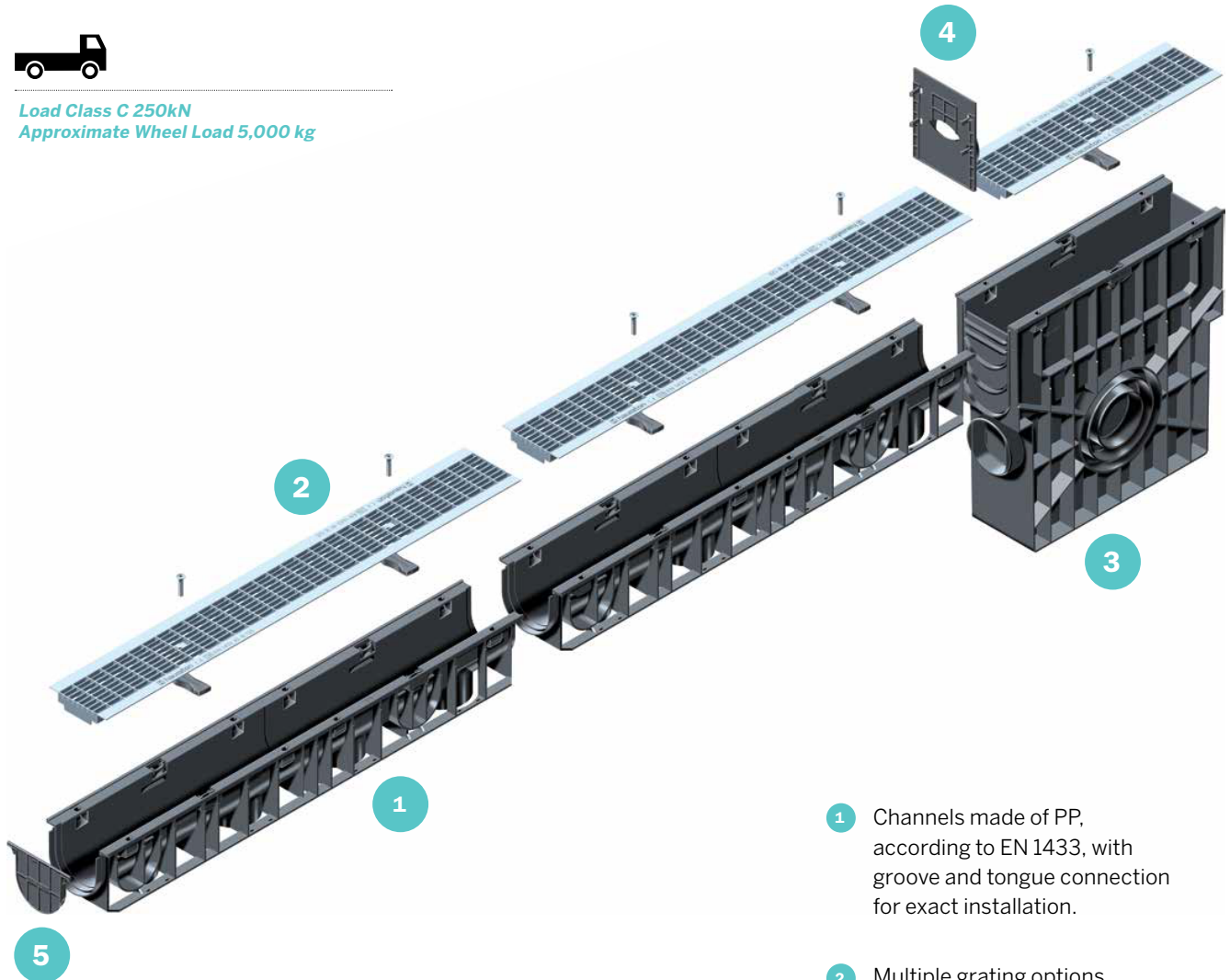
European Standard EN 1433



**Load Class B 125kN**  
Approximate Wheel Load 2,670 kg



**Load Class C 250kN**  
Approximate Wheel Load 5,000 kg



- 1 Channels made of PP, according to EN 1433, with groove and tongue connection for exact installation.
- 2 Multiple grating options.
- 3 Trash box with 3-sided pipe connection possibilities.
- 4 End cap with outlet.
- 5 End cap without outlet.

# RECYFIX® STANDARD 100

Class B 125kN

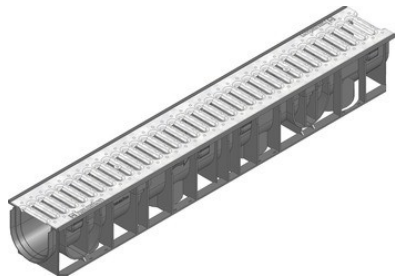


FIG. 2

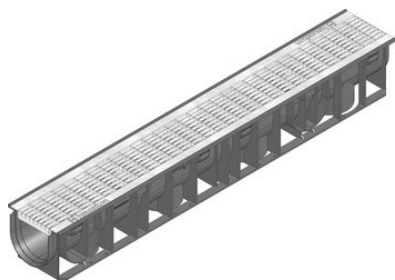
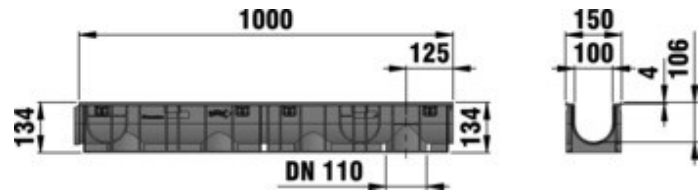


FIG. 3

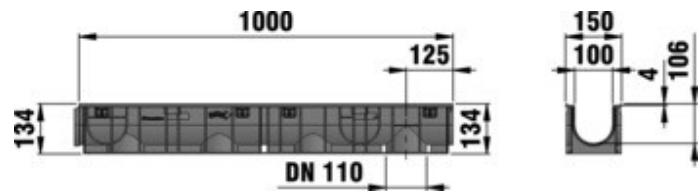


TABLE 1 RECYFIX® STANDARD 100 B 125kN

Code	Description	Intake cross-sect cm <sup>2</sup> /m	Drainage cross-sect cm <sup>2</sup>	Weight kg	Figure #
CHH01401821	Channel STD 100 134mm Type 01 Galv Slotted 9mm	280	92	4.0	2
CHH01401822	Channel STD 100 134mm Type 01 Galv Mesh 30 x 10mm	650	92	4.6	3

**Class C 250kN**

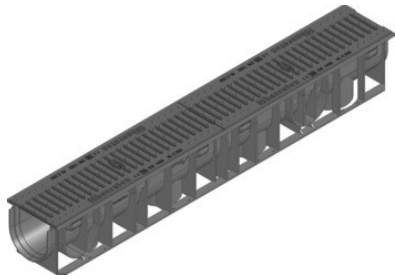


FIG. 4

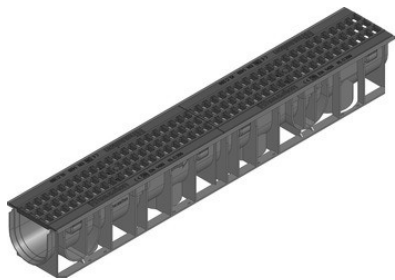
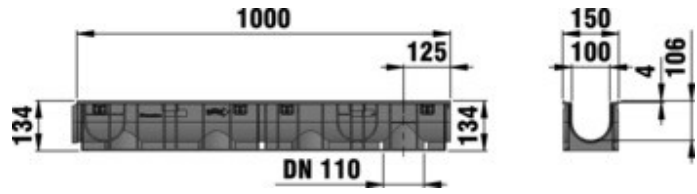
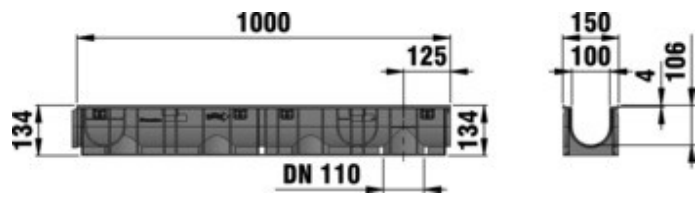


FIG. 5



**TABLE 2** RECYFIX® STANDARD 100 C 250kN

Code	Description	Intake cross-sect cm <sup>2</sup> /m	Drainage cross-sect cm <sup>2</sup>	Weight kg	Figure #
CHH01401830	Channel STD 100 134mm Type 01 DI Slotted 9mm	290	92	8.3	4
CHH01401833	Channel STD 100 134mm Type 01 DI Mesh 15 x 25mm	444	92	7.1	5

## Accessories

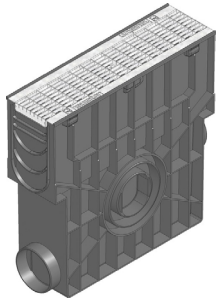


FIG. 6

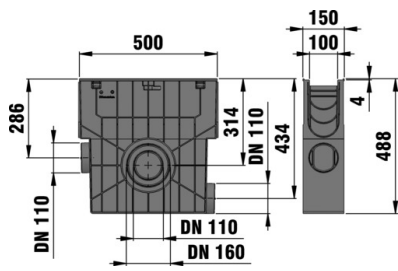


FIG. 7

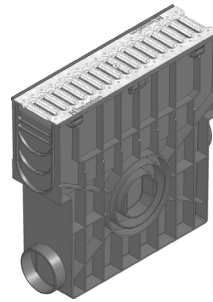


FIG. 8

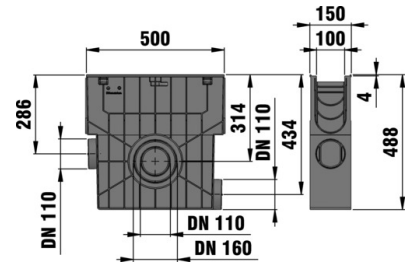


FIG. 9

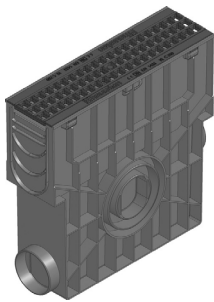


FIG. 10

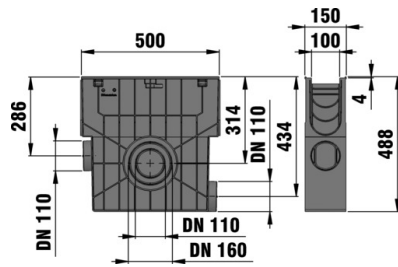


FIG. 11

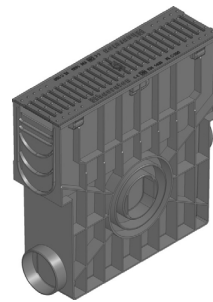


FIG. 12

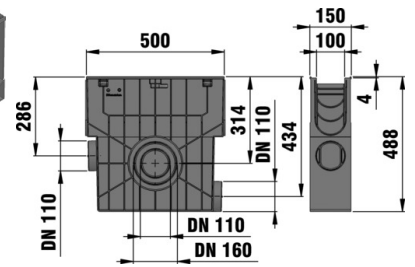


FIG. 13



FIG. 14

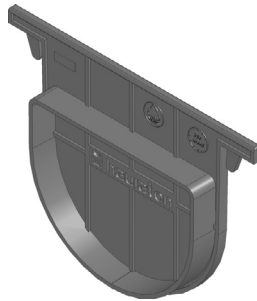


FIG. 15

TABLE 3 RECYFIX® STANDARD 100 Accessories

Code	Description	Length mm	Width mm	Height mm	Figure #
CHH01401803	Trash Box STD 100 Galv Mesh 30 x 10mm B125	500	150	488	6 & 7
CHH01401800	Trash Box STD 100 Galv Slotted 9mm B125	500	150	488	8 & 9
CHH01401806	Trash Box STD 100 DI Slotted 6mm C250	500	150	488	10 & 11
CHH01401809	Trash Box STD 100 Galv Mesh 15 x 25mm C250	500	150	488	12 & 13
CHH01401112.1	End Cap STD 100 134mm Type 01 with 100mm Outlet	-	148	185	14
CHH01401112.2	End Cap STD 100 134mm Type 01 Blank	-	150	108	15

# RECYFIX® STANDARD 150

## Class B 125kN

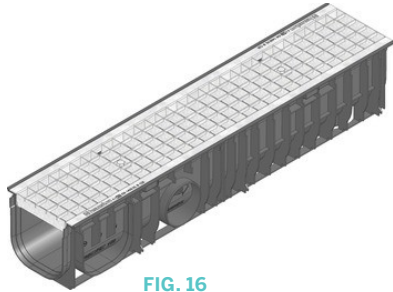


FIG. 16

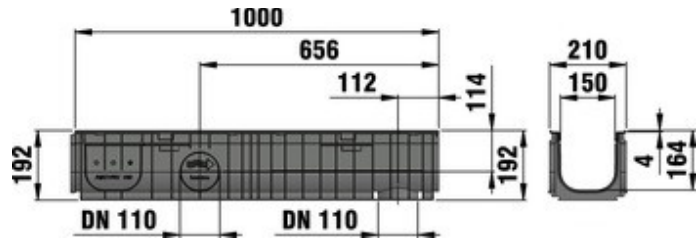


TABLE 4 RECYFIX® STANDARD 150 B 125kN

Code	Description	Intake cross-sect cm <sup>2</sup> /m	Drainage cross-sect cm <sup>2</sup>	Weight kg	Figure #
CHH01401841	Channel STD 150 192mm Type 01 Galv Mesh 30 x 30mm	1081	225	7.7	16

## Class C 250kN



FIG. 17

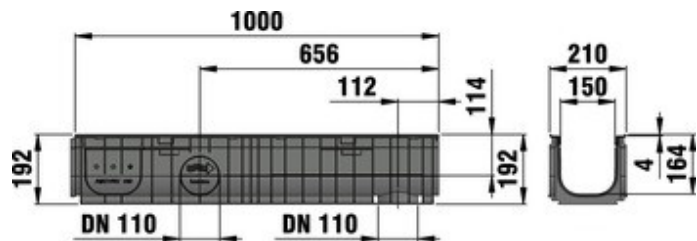


FIG. 18

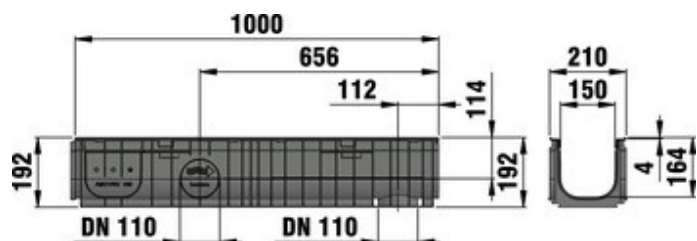


TABLE 5 RECYFIX® STANDARD 150 C 250kN

Code	Description	Intake cross-sect cm <sup>2</sup> /m	Drainage cross-sect cm <sup>2</sup>	Weight kg	Figure #
CHH01401844	Channel STD 150 192mm Type 01 DI Slotted 6mm	400	225	14.0	17
CHH01401846	Channel STD 150 192mm Type 01 DI Mesh 15 x 25	745	225	12.4	18



## Accessories

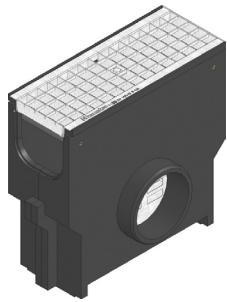


FIG. 19

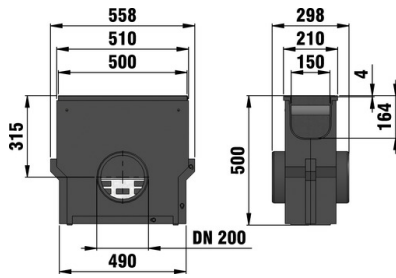


FIG. 20

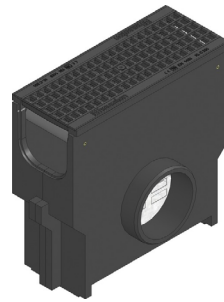


FIG. 21

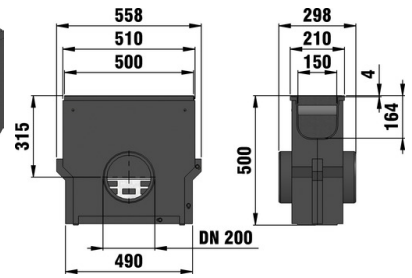


FIG. 22



FIG. 23

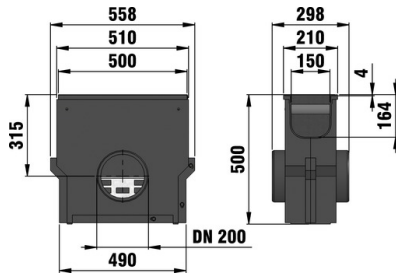


FIG. 24

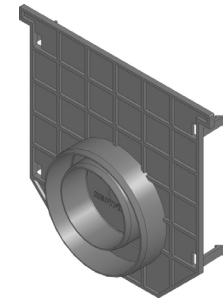


FIG. 25

TABLE 6 RECYFIX® STANDARD 150 Accessories

Code	Description	Length mm	Width mm	Height mm	Figure #
CHH01401812	Trash Box STD 150 Galv Mesh 30 x 30mm B125	500	210	500	19 & 20
CHH01401815	Trash Box STD 150 DI Slotted 6mm C250	500	210	500	21 & 22
CHH01401818	Trash Box STD 150 DI Mesh 15 x 25mm C250	500	210	500	23 & 24
CHH01401163	End Cap STD 150 235mm Type 01 with 70-100 Outlet	-	210	203	25

# RECYFIX® STANDARD 200

## Class B 125kN

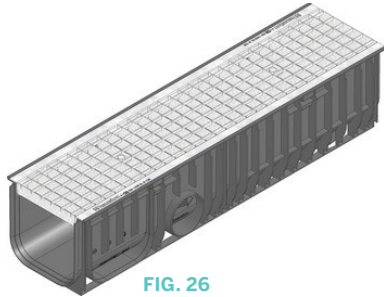


FIG. 26

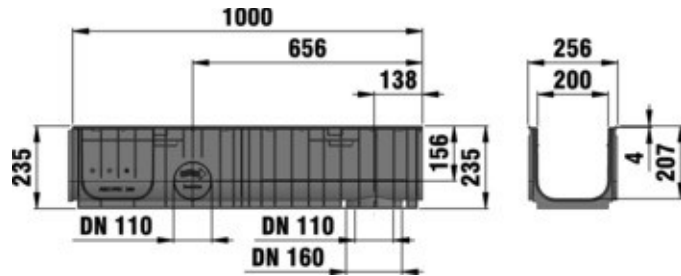


TABLE 7 RECYFIX® STANDARD 200 B 125kN

Code	Description	Intake cross-sect cm <sup>2</sup> /m	Drainage cross-sect cm <sup>2</sup>	Weight kg	Figure #
CHH01401850	Channel STD 200 235mm Type 020 Galv Mesh 30 x 30mm	1620	394	9.7	26

## Class C 250kN



FIG. 27

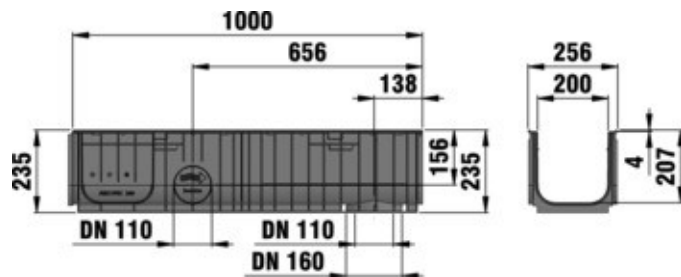


FIG. 28

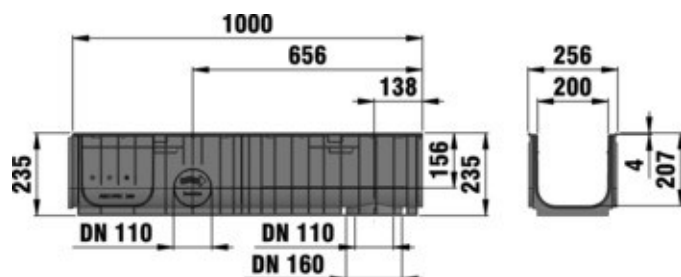


TABLE 8 RECYFIX® STANDARD 200 C 250kN

Code	Description	Intake cross-sect cm <sup>2</sup> /m	Drainage cross-sect cm <sup>2</sup>	Weight kg	Figure #
CHH01401857	Channel STD 200 235mm Type 020 DI Mesh 15 x 25mm	825	394	17.0	27
CHH01401853	Channel STD 200 235mm Type 020 DI Slotted 6mm	557	394	18.1	28

## Accessories

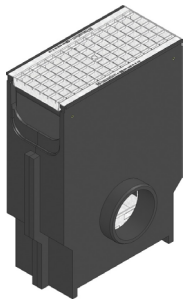


FIG. 29

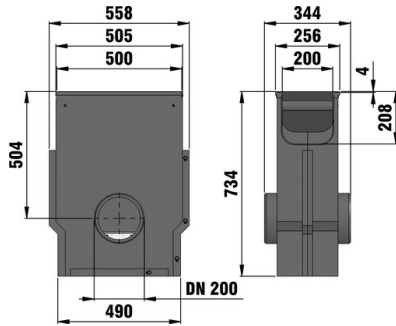


FIG. 30



FIG. 31

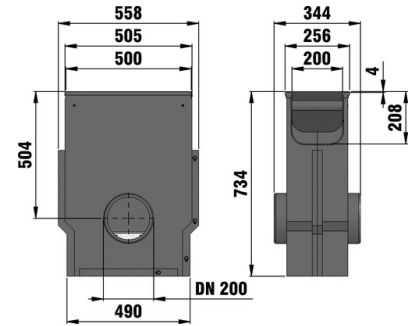


FIG. 32

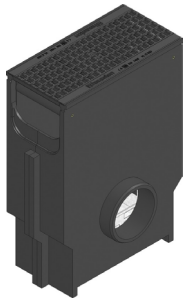


FIG. 33

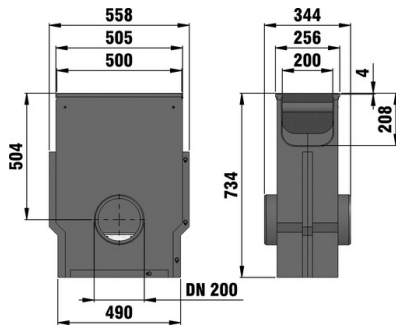


FIG. 34



FIG. 35

TABLE 9 RECYFIX® STANDARD 200 Accessories

Code	Description	Length mm	Width mm	Height mm	Figure #
CHH01401860	Trash Box STD 200 Galv Mesh 30 x 30mm B125	500	256	734	29 & 30
CHH01401863	Trash Box STD 200 DI Slotted 6mm C250	500	256	734	31 & 32
CHH01401866	Trash Box STD 200 DI Mesh 15 x 25mm C250	500	256	734	33 & 34
CHH01401869	End Cap Blank STD 200 Type 020	-	260	275	35

# Installation Guidelines

**Installation example  
Pavement class A 15 - B 125**

3-5 mm durable overhang

Pavement / Flagstone

Pavement bedding

Base course

Frost resistant sub-base

\*  $y \geq$  Channel height - 10 cm

Category according to EN 1433 / DIN 19580	<b>A 15</b>	<b>B 125</b>	<b>C 250</b>	<b>D 400**</b>	<b>E 600</b>	<b>F 900</b>	Applying to following systems: <b>RECYFIX STANDARD 100, 150, 200, 300</b> <b>RECYFIX PLUS 100, 150, 200, 300</b>
Foundation: width x / thickness z / height y (in cm)	10 / 10 / *	10 / 10 / *					
The named concrete quality is a minimum quality***							
EN 206-1 / DIN 1045-2	without danger of frost on the lateral support C 20/25	with danger of frost on the lateral support C 20/25					
The installation examples / advise constantly are adapted to the technical conditions. With new editions older expenditures lose their validity. Before planning or installation please verify the current version at <a href="http://www.hauraton.com">www.hauraton.com</a> In building construction is a sealing layer below the channels necessary.	Date: 24.10.2018		Our general installation instructions apply.			Format DIN A4 scale 1:5	 Unit 4, Frenchs Avenue LU6 1BH Dunstable / Bedfordshire Tel. +44 1582 50 1380 technical@hauraton.co.uk
** Not for use in continuously frequented areas of carriageways or motorways *** European Standard. C 20/25 = minimum 25mPa, C 30/37 = minimum 37mPa	0000023520.dwg EBBw		RF-StaN-100 Typ 01 Rinnenunterteil Einbaubeispiel Klasse B 125 in Pflaster				

**Installation example  
Pavement class C 250**

3-5 mm durable overhang

The row of paver along the channel run placed in concrete bedding

Pavement / Flagstone

Pavement bedding

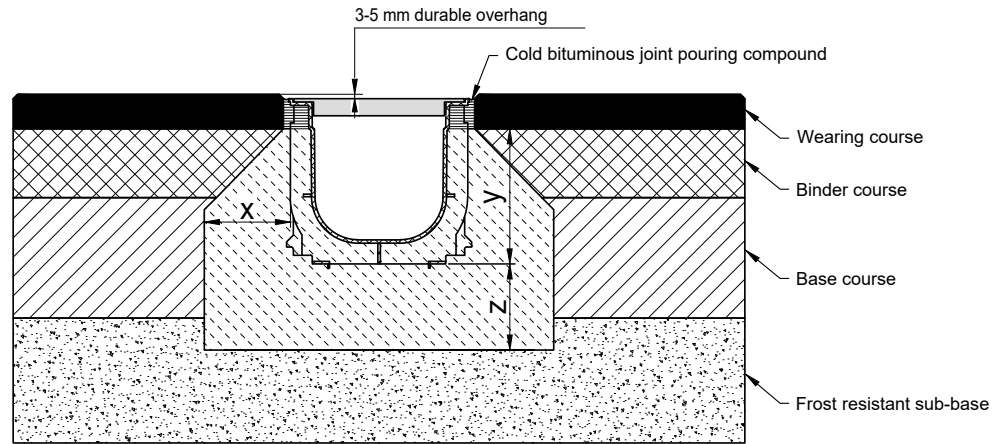
Base course

Frost resistant sub-base


\*  $y =$  Channel height plus camber

Category according to EN 1433 / DIN 19580	<b>A 15</b>	<b>B 125</b>	<b>C 250</b>	<b>D 400**</b>	<b>E 600</b>	<b>F 900</b>	Applying to following systems: <b>RECYFIX STANDARD 100, 150, 200, 300</b> <b>RECYFIX PLUS 100, 150, 200, 300</b>
Foundation: width x / thickness z / height y (in cm)			10 / 15 / *				
The named concrete quality is a minimum quality**							
EN 206-1 / DIN 1045-2			C 20/25 with danger of frost on the lateral support C 30/37 XD 1				
The installation examples / advise constantly are adapted to the technical conditions. With new editions older expenditures lose their validity. Before planning or installation please verify the current version at <a href="http://www.hauraton.com">www.hauraton.com</a> In building construction is a sealing layer below the channels necessary.	Date: 24.10.2018		Our general installation instructions apply.			Format DIN A4 scale 1:5	 Unit 4, Frenchs Avenue LU6 1BH Dunstable / Bedfordshire Tel. +44 1582 50 1380 technical@hauraton.co.uk
** Not for use in continuously frequented areas of carriageways or motorways *** European Standard. C 20/25 = minimum 25mPa, C 30/37 = minimum 37mPa	0000023610.dwg EBBw		RF-StaN-100 Typ 01 Rinnenunterteil Einbaubeispiel Klasse C 250 in Pflaster				

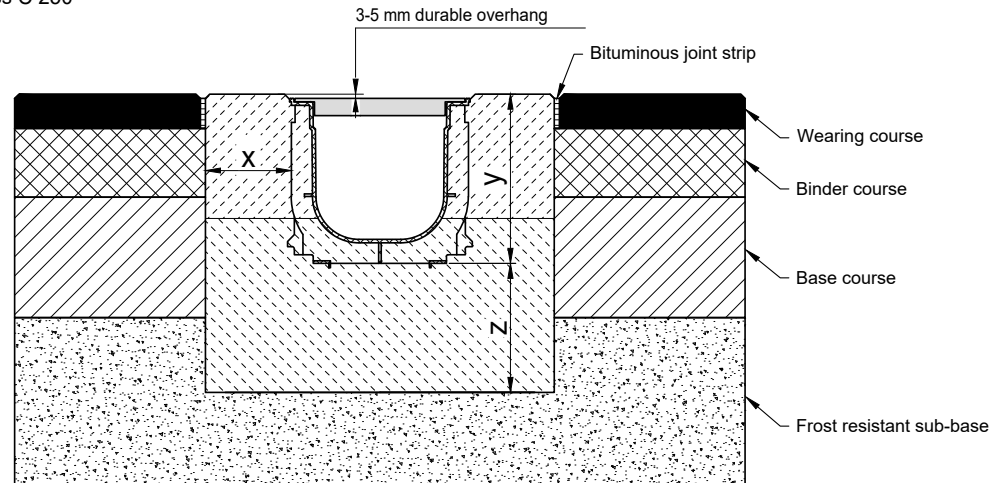
**Installation example  
in asphalted areas class A 15 - B 125**  
Restriction: Suitable for low-traffic areas




\* y = Channel height - 4 cm

Category according to EN 1433 / DIN 19580	<b>A 15</b>	<b>B 125</b>	<b>C 250</b>	<b>D 400**</b>	<b>E 600</b>	<b>F 900</b>	Applying to following systems: <b>RECYFIX STANDARD 100, 150, 200, 300</b> <b>RECYFIX PLUS 100, 150, 200, 300</b>
Foundation: width x / thickness z / height y (in cm)	10 / 10 / *	10 / 10 / *					
The named concrete quality is a minimum quality***							
EN 206-1 / DIN 1045-2	without danger of frost on the lateral support	C 20/25	C 20/25				Format DIN A4 scale 1:5  Unit 4, Frenchs Avenue LU6 1BH Dunstable / Bedfordshire Tel. +44 1582 50 1380 technical@hauraton.co.uk
	with danger of frost on the lateral support	C 30/37 XD 1	C 30/37 XD 1				
The installation examples / advise constantly are adapted to the technical conditions. With new editions older expenditures lose their validity. Before planning or installation please verify the current version at <a href="http://www.hauraton.com">www.hauraton.com</a> In building construction is a sealing layer below the channels necessary.		Date: 24.10.2018		Our general installation instructions apply.			
** Not for use in continuously frequented areas of carriageways or motorways		0000023631.dwg		EBBw			
*** European Standard. C 20/25 = minimum 25mPa, C 30/37 = minimum 37mPa		RF-StdL-150 Typ 01 Rinnenunterteil Einbaubeispiel Klasse B 125 in Asphalt					

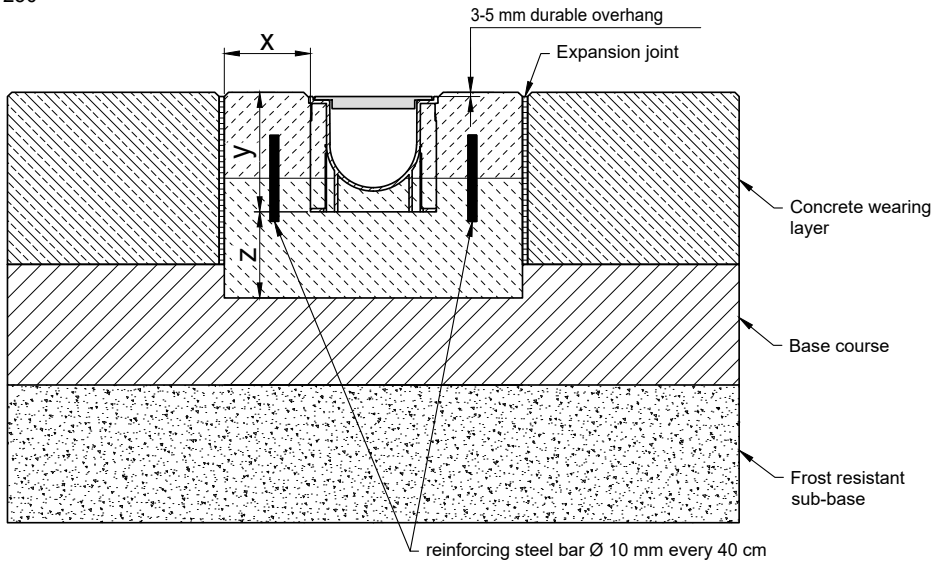
**Installation example  
in asphalted areas class C 250**




\* y = Channel height plus camber

Category according to EN 1433 / DIN 19580	<b>A 15</b>	<b>B 125</b>	<b>C 250</b>	<b>D 400**</b>	<b>E 600</b>	<b>F 900</b>	Applying to following systems: <b>RECYFIX STANDARD 100, 150, 200, 300</b> <b>RECYFIX PLUS 100, 150, 200, 300</b>
Foundation: width x / thickness z / height y (in cm)			10 / 15 / *				
The named concrete quality is a minimum quality***							
EN 206-1 / DIN 1045-2	quality of concrete stretcher		C 30/37 XF 4				Format DIN A4 scale 1:5  Unit 4, Frenchs Avenue LU6 1BH Dunstable / Bedfordshire Tel. +44 1582 50 1380 technical@hauraton.co.uk
	with danger of frost on the lateral support		C 30/37 XD 1				
The installation examples / advise constantly are adapted to the technical conditions. With new editions older expenditures lose their validity. Before planning or installation please verify the current version at <a href="http://www.hauraton.com">www.hauraton.com</a> In building construction is a sealing layer below the channels necessary.		Date: 25.10.2018		Our general installation instructions apply.			
** Not for use in continuously frequented areas of carriageways or motorways		0000055956.dwg		EBBw			
*** European Standard. C 20/25 = minimum 25mPa, C 30/37 = minimum 37mPa		RF-StdL-150 Typ 01 Rinnenunterteil Einbaubeispiel Klasse C 250 in Asphalt					

Installation example  
concrete class A 15 - C 250



\* y = Channel height plus camber

Category according to EN 1433 / DIN 19580		A 15	B 125	C 250	D 400**	E 600	F 900	Applying to following systems: <b>RECYFIX STANDARD 100, 150, 200, 300</b> <b>RECYFIX PLUS 100, 150, 200, 300</b>
Foundation: width x / thickness z / height y (in cm)		10 / 10 / *	10 / 10 / *	10 / 15 / *				
The named concrete quality is a minimum quality***								
EN 206-1 / DIN 1045-2	quality of concrete stretcher	C 30/37 XF 4	C 30/37 XF 4	C 30/37 XF 4				
	with danger of frost on the lateral support	C 30/37 XD 1	C 30/37 XD 1	C 30/37 XD 1				
The installation examples / advise constantly are adapted to the technical conditions. With new editions older expenditures lose their validity. Before planning or installation please verify the current version at <a href="http://www.hauraton.com">www.hauraton.com</a> in building construction is a sealing layer below the channels necessary.		Date: 24.10.2018		Our general installation instructions apply.		Format DIN	A4	 Unit 4, Frenchs Avenue LU6 1BH Dunstable / Bedfordshire Tel. +44 1582 50 1380 technical@hauraton.co.uk
** Not for use in continuously frequented areas of carriageways or motorways *** European Standard. C 20/25 = minimum 25mPa, C 30/37 = minimum 37mPa		0000023627.dwg EBBw				scale	1:5	
RF-StaN-100 Typ 01 Rinnenunterteil Einbaubeispiel Klasse B 125 in Beton								



**FIG. 36** RECYFIX STANDARD 100 Channel C 250kN with Ductile Iron Mesh 15x25mm Grate



Scan for more  
information

**Disclaimer:** While every effort has been made to ensure that the information in this document is correct and accurate, users of Hygrade Water product or information within this document must make their own assessment of suitability for their particular application. Product dimensions are nominal only, and should be verified if critical to a particular installation. No warranty is either expressed, implied, or statutory made by Hygrade Water unless expressly stated in any sale and purchase agreement entered into between Hygrade Water and the user.

**March 2024**

**0800 494 723**  
**hygradewater.co.nz**

**102 Neilson Street**  
Onehunga, Auckland 1061, New Zealand  
PO Box 58142, Botany, Auckland 2163

