

R2M cQuick² Encapsulation Collars

R2M's cQuick2 encapsulation collars provide a quick, light, and viable solution when making a permanent repair to leaking AC, CI, DI, PVC and other pipe joints. It may also encapsulate leaking flanges, couplers, or previously installed repair clamps depending on the size of the fitting or the joint.



TECHNICAL GUIDE: **PF3.2**

Applications

Encapsulates leaking joints in a variety of pipe materials

Product Attributes

Installations can be made under live conditions

Wide tolerance allows for unevenness, ovality, and measuring errors

16 Bar rated

50 year service life

Approvals/Standards

WRAS Approved Fusion Bonded Epoxy Coating

WRAS Approved Sealing Systems

Quality

ISO9001:2015, ISO14001:2015,
ISO45001:2018

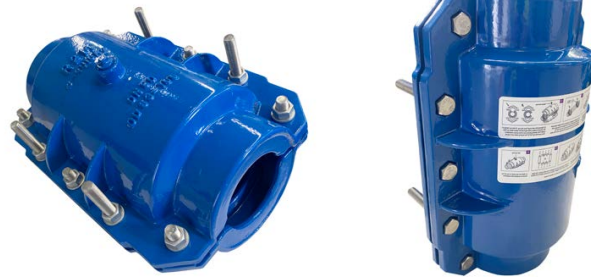
The cQuick2 encapsulation collars are a fast way to encapsulate leaks on live pipe lines while having a wide tolerance to allow for pipe line unevenness and ovality. The EPDM sealing system, full fusion bonded epoxy coating and stainless steel fixings ensure a long service life and permanent repair.











Product Features


- Encapsulation cavity is designed to accommodate leaking socket spigot joints, AC collars, flanges, couplers or previously installed repair clamps.
- All installations can be made under live conditions without the need to shut off water, re-pressurise, chlorinate or sample.
- Wide tolerance encapsulation collars allow for pipe unevenness, ovality, and measuring errors.
- Couplers are 16 bar rated for watermain use.
- Bolts are on each side for quick and easy access and installation.
- Installation only requires a 24mm socket and torque wrench.
- Full 360° coverage of the joint.
- Can accommodate up to 8° angular deflection.

Applications

- Can encapsulate leaking socket spigot joints, AC collars, flanges, couplers or previously installed repair clamps.
- Encapsulates leaking joints in a variety of pipe materials such as:
 - AC collars
 - CI socket spigot joints
 - DI socket spigot joints
 - PVC RRJ joints
 - PE Electrofusion couplers
 - Repair clamps



Item Code	NB (mm)	pd range min-max (mm)	Encapsulation Cavity ID (mm)	Encapsulation Cavity Inside Length (cL) (mm)	Bolt Size	OAL (L) (mm)	Weight (kg)
 CRCQUICK2100	80	83-100	216	286	-	434	30
 CRCQUICK2150	100	112-130	246	286	-	434	33
 CRCQUICK2150	125	138-152	275	318	-	433	38
 CRCQUICK2150	125	145-158	275	318	-	433	38
 CRCQUICK2200	150	166-183	318	318	-	433	39
 CRCQUICK2200	200	216-234	361	286	-	434	49
 CRCQUICK2250	225	258-275	445	400	12 x M20	-	75
 CRCQUICK2250	250	273-291	488	450	12 x M20	-	90
 CRCQUICK2300	300	323-340	530	500	12 x M20	-	105
 CRCQUICK2350	350	340-358	548	500	12 x M20	-	108

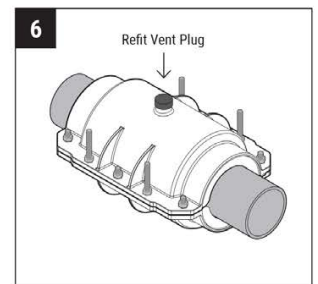
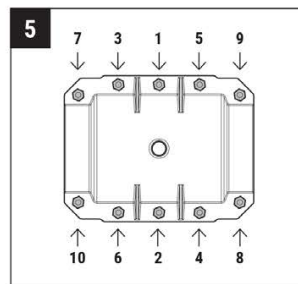
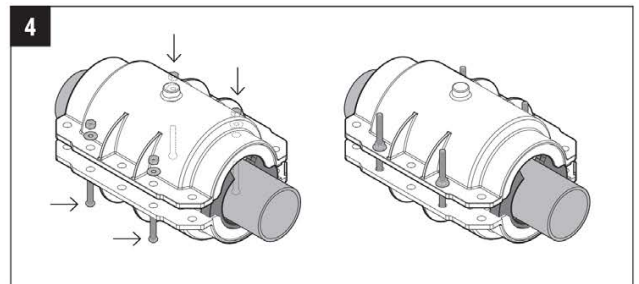
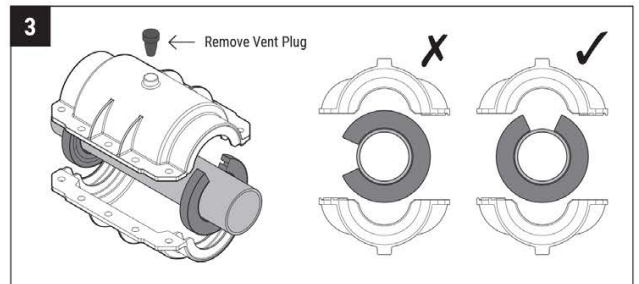
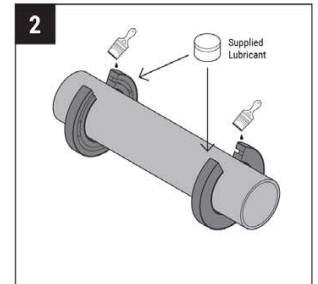
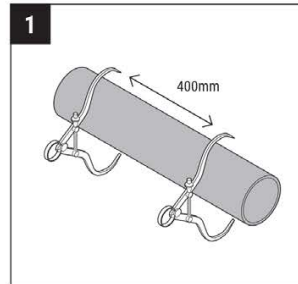
 = Items available on indent order only.

cQuick Installation Instructions

Before starting, clean the working area of the pipe. Remove any loose scale, grind out deep scratches and spray the inside of the fitting with a suitable pipe disinfectant to ensure a smooth and clean installation.

1. Measure the actual diameter of the pipe where the seal will land. Check that the diameter lies within the given range of the cQuick.
2. Thoroughly lubricate all surfaces of the rubber seals with the lubricant provided, then fit the seals on to the pipe with the grooves facing inwards as shown. Ensure that the openings are at the top or bottom of the pipe, not to the side.
3. Remove the vent plug the top. Fit the two halves of the cQuick housing, ensuring that the rubber seals are fully inside their seating groove and in the correct orientation. Then push the top half of the housing down until secure.
4. Fasten the top and bottom housing components with the four long bolts, washers and nuts as shown.
5. Add the remaining bolts and tighten in order shown. Pull sides together evenly and in stages. Torque to 120-150Nm.
6. Refit the vent plug or turn off the ferrule to complete the installation.

In cases where the leak is severe a ½" ferrule may be used to vent the pressure whilst installing the clamp.





Scan for more
information

Disclaimer: While every effort has been made to ensure that the information in this document is correct and accurate, users of Hygrade Water product or information within this document must make their own assessment of suitability for their particular application. Product dimensions are nominal only, and should be verified if critical to a particular installation. No warranty is either expressed, implied, or statutory made by Hygrade Water unless expressly stated in any sale and purchase agreement entered into between Hygrade Water and the user.

June 2022

0800 494 723
hygradewater.co.nz

102 Neilson Street
Onehunga, Auckland 1061, New Zealand
PO Box 58 142, Botany, Auckland 2163

